

# Waltham Land Trust

is a non-profit corporation dedicated to preserving our community's natural resources for the future through education, open space acquisition and protection.



## JOURNAL SPRING 2025

### 21st Annual Green Space Blues Jam Returns to Stonehurst May 16

*Scott Shurr, Special Events Committee*

Secure your tickets now for the 21st Annual Green Space Blues Jam, to be held Friday, May 16, from 7:30 to 10:30 p.m. We're thrilled to return to a favorite venue of ours, Stonehurst, the Robert Treat Paine Estate, a National Historic Landmark with over 100 acres of public open space designed by architect Henry Hobson Richardson and landscape architect Frederick Law Olmsted, now owned by the City of Waltham. The Land Trust held the Green Space Blues Jam here for many years, then we decided to try a few different venues. Now, after being at three other locations, it's time to go back to the warm and beautiful Stonehurst, where you can walk outside and be in preserved open space.

This year, we will be entertained by Paul Rishell and Annie Raines, who graced us with their perfect blend of blues and American roots music during our 2020 Green Space Blues Jam In Place, held virtually due to the COVID-19 pandemic. We can't wait to see them in person and boogie with you all on the dance floor.

For 31 years, Paul Rishell & Annie Raines have been hailed as one of the world's best blues duos. They have recorded six albums together including the W.C. Handy Award-winning *Moving to the Country* (2000), and received numerous award nominations from the Blues Foundation. They have performed and recorded with John Sebastian, Susan Tedeschi, Pinetop Perkins and Rory Block. They have opened for Ray Charles, Dr. John, and Little Feat, and performed on international radio and TV shows

including *Late Night with Conan O'Brien* and *A Prairie Home Companion*.

From 2011 to 2022 they worked as Visiting Artists in the American Roots Music Program at Berklee College of Music in Boston, teaching Country Blues techniques and history to new generations of aspiring musicians. They continue to perform American roots music and their own compositions at festivals, concert halls, and clubs all over the world.

At the event, attendees will enjoy snacks and desserts from Crisp Catering out of Walpole (vegan and vegetarian options will be available), as well as beer from Boston Beer Company, StormAlong hard cider, and wine from Sumo Liquors in Waltham. Non-alcoholic drinks will also be offered.

We hope for excellent weather so we can celebrate our many successes from the last year and mingle with supporters outside on the lovely grounds.

We're looking for business and individual sponsors! Find details at <https://walthamlandtrust.org/green-space-blues-jam/> and email Sonja before May 5 at [swadman@walthamlandtrust.org](mailto:swadman@walthamlandtrust.org) if you're able to support this very popular event.

Stonehurst is beautiful, but it's not free, and as we're sure you know, costs for everything have gone up, so the ticket prices had to be raised for this year's event. Tickets are \$75 for WLT members, \$85 for non-members, plus we have a \$40 ticket for people

under 40 years old.

Do you have an item to donate to the online auction? We'll take anything in good condition and valued \$25 or over, but we are particularly interested in securing gift cards and experiences. Please email Sonja at [swadman@walthamlandtrust.org](mailto:swadman@walthamlandtrust.org) to donate.



## Waltham Land Trust's 25th Annual Meeting

Diana Young, WLT Board member, Program Committee Chair

The Waltham Land Trust celebrated its first quarter century of protecting open space in Waltham and educating the community about these natural resources. It was a busy program with highlights and presentations. All the presentations can be found at [walthamlandtrust.org](http://walthamlandtrust.org) by using the search term 'Annual Meeting.'

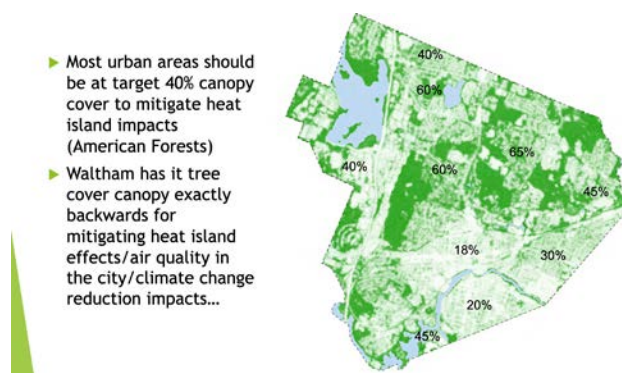
WLT Executive Director Sonja Wadman started with highlights of the year, including an owl program for kids, Earth Day cleanups, bird walks, mushroom walks and a celebration of the Giardina family for three parcels of land purchased from them on Hardy Pond. The now deceased parents of the family had always encouraged the public use of their pond-side parcels.

We celebrated Betty MacKenzie as the *Inge Uhler Environmentalist of the Year* for the work she leads at the Wellington Fields property and on Hardy Pond. She's gathered a legion of people to help clear land and make it accessible to the public. The celebrating continued as Laurel Carpenter showed wonderful photos of the officially open Mass Central Rail Trail. She also discussed the work still left to complete, including repairs to the Linden Street bridge.



The keynote speaker was Dr. Michael Barnett, a professor at Boston College and a leader at the Collaboratory at the Charles River Museum. He works with high school students on STEM based projects in multiple locations, including Waltham. Some of the students' projects produced numerous maps of Waltham showing tree cover, asphalt use, and population density. The lack of trees and heavy asphalt use on the Waltham's South Side explain the heat island affects and the poorer air quality. We learned that the tree cover should be

at least 40% to avoid heat islands, and the South Side's cover is 20%. Professor Barnett's main message was that STEM training like that at the Collaboratory is exciting to kids and energizes their desire to learn.



The meeting continued with the Land Trust's business side. Marc Rudnick presented the financial results for the fiscal year ended June 30, 2024, which included \$188,600 in revenue and a profit of \$7,500. Assets are \$244,600. Revenue was up as the Land Trust received a \$75,000 grant from the Commonwealth and others for a land survey, wetlands delineation and engineering study. These studies are preliminary to building a trail across the Lyman Estate connecting the Western Greenway to the rail trail.

The final official business was to elect board members. Emily Szczypek and Rita Cramer were elected for the first time, while Nadene Stein and Dan Melnechuk were confirmed for another three-year term. Read Emily and Rita's biographies, plus that of new Board member Mark Sivers (who was added to the Board in February) elsewhere in this Journal.

After the meeting adjourned, we all enjoyed each other's company and Toscani's ice cream, thanks to Marc Rudnick and Sally Wetzler.

### Help WLT Go Paperless!

Join the 125 Land Trust members who have selected to have their *Journals* sent to them electronically. By opting out of the mailed hard copy, these supporters are helping WLT reduce our carbon footprint and save on costs associated with printing, postage, and transportation. Please send an email with your name to [swadman@walthamlandtrust.org](mailto:swadman@walthamlandtrust.org), with the subject header "Electronic Journal" if you'd like the next *Journal* emailed to you. Please remember that receiving *The Journal* is a privilege of membership. Be sure you are up to date with your dues so you don't miss the *Fall 2025 Journal*!



## WLT Welcomes Three New Members to Its Board

### Rita Cramer

Rita Cramer has lived in Waltham since 1999. After leaving a career in project management, she now teaches part-time at Showa University in Boston. Rita has served as a member and/or officer on four previous nonprofit boards. She has been involved in the WLT as a steward, then as a member of the Special Events Committee. Rita is also involved in the cycling and running communities, and hopes that the common interests of walkers, hikers, cyclists, and runners will help us maintain and expand open space in Waltham. Currently, Rita is an organizer for Waltham Trail Runners, a bicycle leader for North Shore Cyclists, and an ambassador for the Ride to End Alzheimer's.



ing three children. He has founded numerous dental service organizations across the United States. Beyond his professional achievements, Dr. Siverson is on various boards including the University of Oxford Progress Through Business, Brigham Young University Marriott School of Business, and the Academy of Dental Group Practices (AADGP).

### Emily Szczypek

Emily Szczypek moved to Waltham in 1995 and is a steward for the Waltham Land Trust, primarily working along the Charles River. She loves birdwatching and has led birdwatching trips along the Charles River and elsewhere. Emily also enjoys birdwatching by bicycle in Waltham away from the river.



She bicycles with Bike Together Waltham and is a member of MA Audubon, Brookline Bird Club, Menotomy/Arlington Bird Club, The Trustees of Reservations, National Wildlife Federation, Community Boating Inc. in Boston, and the Massapoag Yacht Club in Sharon, MA. Emily has been involved with Waltham Inclusive Neighborhood (WIN) and has an official Monarch Way Station yard.

### Dr. Mark Siverson

Dr. Mark Siverson and his wife have made the Boston area their home for over two and a half decades. Throughout his personal and professional endeavors, Dr. Siverson has participated in eco-friendly development while simultaneously managing profitable businesses and rais-



## College Grads Clean Up by Elm Street Bridge

On March 20, 2025, new WLT Board member and long-time steward Emily Szczypek organized a cleanup along the Charles River by the Elm Street bridge with about thirty local graduates from various colleges. The group is called InterVarsity and is focused on raising awareness about global engagement and social justice issues. We thank them, and the MA Department of Conservation and Recreation for picking up what they collected.



## Update from Save Waltham Wildlife, A Waltham Land Trust Initiative

*Michele Grzenda, SWW Steering Committee*

Save Waltham Wildlife (SWW) began in 2022 when several Waltham residents and members of Waltham Land Trust became concerned about the impacts that Second-Generation Anti-Coagulant Rodenticides (SGARs) were having on our local raptors. SGARs are potent rodenticides that disrupt blood clotting, causing prolonged internal bleeding in rodents. However, these poisons have unintended harmful effects on Waltham's wildlife. Predators such as hawks, owls, eagles, and foxes that consume poisoned rodents frequently suffer secondary poisoning, leading to illness and death.

SWW has partnered with more than 66 community organizations to reduce or eliminate the use of SGARs. Our approach combines educational initiatives, advocacy work, and promotion of effective alternative rodent control methods at both local and state levels. During the past year, SWW organized several online forums that (1) taught residents how to identify and document bait box locations, (2) provided updates on municipal initiatives, and (3) offered guidance on engaging neighbors and business owners about proper trash management and non-SGAR alternatives.

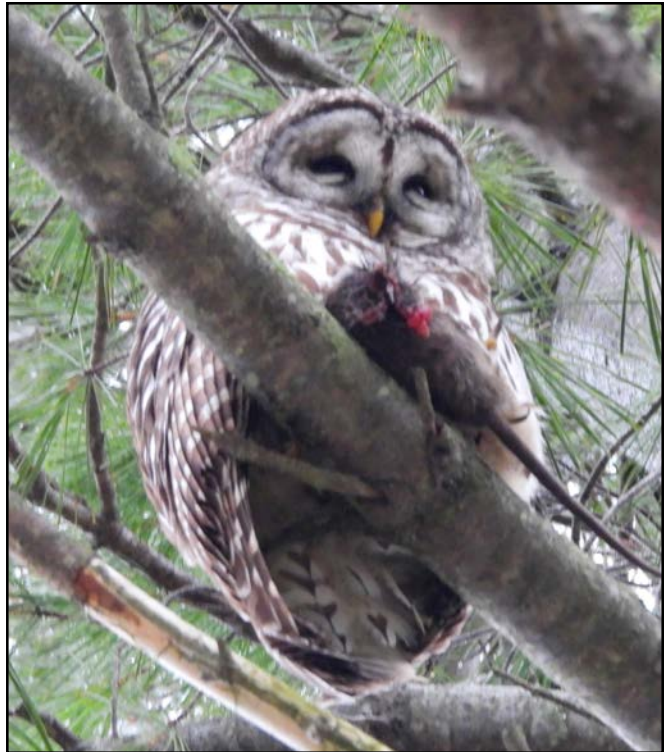
Recently, members of SWW thanked City officials for setting a great example by discontinuing the use of SGARs on city properties and using snap traps instead. We also want to express appreciation for Waltham's increasingly holistic approach—including mandating better forms of trash management to reduce the rodent population by cutting off their food sources. We're particularly grateful for the new Big Belly trash receptacles



on Moody Street, Main Street, and on the Waltham Common.

SWW hopes that the City will continue to do more. Members of SWW have encouraged City officials to support (1) efforts to create

a local dumpster ordinance so that the City can inspect dumpsters and enforce the proper use of covers and drains; (2) funding that would supply residents who need them with lidded trash bins—not all of our neigh-



bors have the resources to purchase these; (3) installing more Big Belly receptacles in our parks, playgrounds, and public ways; and (4) use the building permitting process to mandate that builders and developers not use SGAR poisons in the course of construction and/or remodeling.

To learn more and become involved with SWW, sign up at [www.tinyurl.com/SWWPledge2025](http://www.tinyurl.com/SWWPledge2025) or email [savewalthamwildlife@gmail.com](mailto:savewalthamwildlife@gmail.com).





# Birds of Prey In Massachusetts

Look for words down, across and diagonal



Great Horned Owl  
Long eared Owl  
Sharp shinned Hawk  
Broad winged Hawk  
Merlin  
Osprey

Barred Owl  
Barn Owl  
Coopers Hawk  
Red tailed Hawk  
Peregrine Falcon  
Bald Eagle

Eastern Screech Owl  
Short eared Owl  
Northern Goshawk  
Rough legged Hawk  
Black Vulture  
Northern Harrier

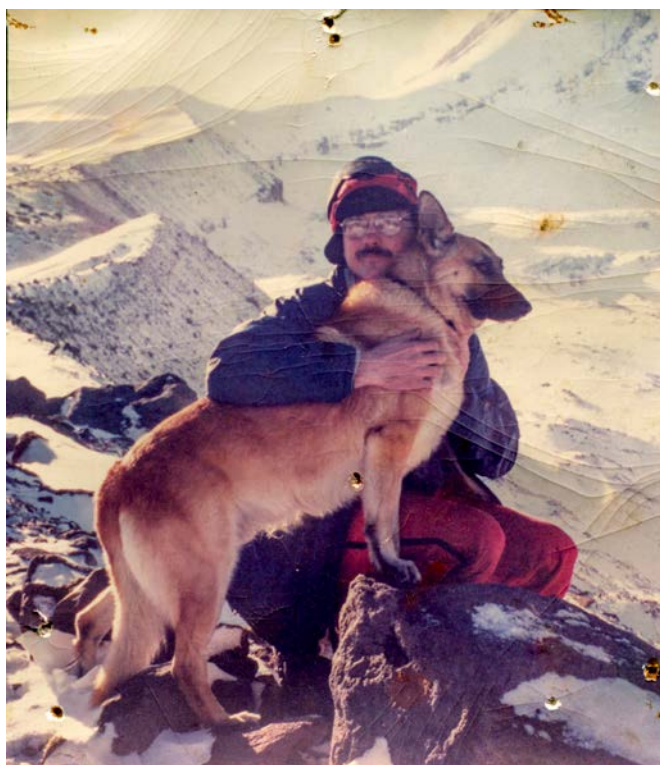
Northern Saw whet Owl  
Snowy Owl  
Red shouldered Hawk  
American Kestrel  
Turkey Vulture

## Giving to Land Preservation

*Anonymous Donor, WLT Member*

Pete Gayeska was born and raised in the Boston area and moved to Portland, Oregon, in his 30s, where he lived for the rest of his life. He was an avid outdoorsman who loved skiing, canoeing, hiking, and mountain climbing (attached is a photo of Pete on Mt. Hood with his trusty German shepherd, Ra). Despite the physical distance between them, Pete cared deeply for his extended family, most of whom remained on the east coast. He was generous even to his cousins' children, despite having only met them once.

Pete passed away in 2022, and one of his heirs has selected Waltham Land Trust as the fitting recipient of a donation in Pete's memory. This donation is inspired by WLT's foray into strategic acquisition of land for preservation, an exciting project that will hopefully continue to expand. Over the past 25 years, WLT's leadership has developed a strong local community of environmental advocates and volunteers, positioning WLT well to work on assembling and restoring contiguous parcels of green space, and a network of Pocket Preserves throughout the city. The donor hopes this donation inspires other Waltham residents to similarly contribute to funding the acquisition and restoration of green space in our city.

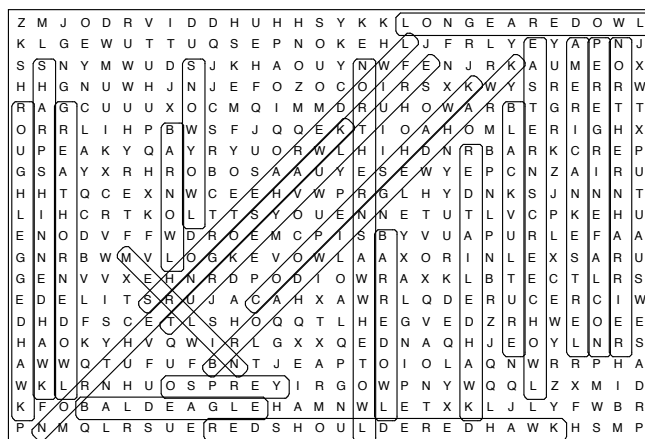


## WANTED: Outreach Tabling Volunteers

As we welcome spring and anticipate summer, the Land Trust aims to involve more and more nature enthusiasts in our fun and important activities. Just take a look at the many scheduled Upcoming Events at the end of this Journal! Our list doesn't include tabling at the Waltham Farmers' Market and local festivals this summer, where we come across all sorts of people excited to connect with fellow nature lovers.

Please consider helping us spread the word about WLT's programs, properties, and advocacy efforts by volunteering to sit at our Outreach Table with our materials and an experienced tabler knowledgeable about our activities. Email Sonja (who LOVES tabling) at [swadman@walthamlandtrust.org](mailto:swadman@walthamlandtrust.org) or call 781-893-3355 to get involved. After one easy and truly enjoyable session, you'll wonder why you didn't do it sooner.

### Birds of Prey In Massachusetts



Great Horned Owl	Barred Owl	Eastern Screech Owl	Northern Saw whet Owl
Long eared Owl	Barn Owl	Short eared Owl	Snowy Owl
Sharp shinned Hawk	Coopers Hawk	Northern Goshawk	Red shouldered Hawk
Broad winged Hawk	Red tailed Hawk	Rough legged Hawk	American Kestrel
Merlin	Peregrine Falcon	Black Vulture	Turkey Vulture
Osprey	Bald Eagle	Northern Harrier	

## Upcoming Events with the Waltham Land Trust

### **Mindfulness and Stress-Reduction Workshop and Walk**

*Thursday, April 17, 1:00 - 2:30 p.m.*

*Stonehurst, 100 Robert Treat Paine Drive*

Mindfulness fills a great need to find physical, mental, and emotional calm in these busy, often overwhelming times while promoting non-judgmental awareness of the present moment. Participants will learn how to be kinder to themselves and others, more confident, and less judgmental. Time will include a mindful walk around the property, weather permitting. Call Waltham Council on Aging to register: 781-314-3499.

### **Charles River Earth Day Cleanup**

*Saturday, April 26, 10:00 a.m. - 12:00 p.m.*

THIS EVENT IS AT CAPACITY

### **Restorative, Gentle Indoor Yoga Fundraiser**

*Tuesday, April 29, 6:30 - 7:30 p.m.*

*Shiva Shakti, 8 Common Street*

Take part in a night of restorative and gentle yoga for every level, hosted by Shiva Shakti, located above the WLT office. From beginners to experienced practitioners, are all welcome! This is an “unwind the nervous system” class that takes off the rush and demands of keeping up with the demands of city living. Nature themes, plus calming music and forms, will be included. Optional visit to the WLT office afterwards. Tickets are \$20 for current dues-paying members, \$25 for non-WLT members. Pay in advance at [walthamlandtrust.org](http://walthamlandtrust.org), or bring cash or a check made out to Waltham Land Trust that night.

### **Guided Walk along the Charles River**

*Saturday, May 10, 1:00 - 2:30 p.m.*

*Meet in Landry Park by the fish ladder, 154 Moody St*

Take a break from the Watch City Steampunk Festival with an easy walk along the Charles. We'll learn about the Mill and its environs as we trek over the beautiful boardwalk that passes by the Charles River Museum of Industry and Innovation. After continuing under Elm Street on the paved pathway, we'll cross to the other side of the river and look for wildlife at various places before turning around and returning to the festivities. Costumed participants encouraged!

### **21st Annual Green Space Blues Jam**

*Online auction Wednesday, May 14 - Sunday, May 18*

*In-person gala event Friday, May 16, 7:30 - 10:30 p.m.*

*Stonehurst, 100 Robert Treat Paine Drive*

Attend the Land Trust's major fundraiser with lots of indoor and outdoor space at one of our favorite venues, Stonehurst! Featuring live music with Paul Rishell and Annie Raines. Ticket price (\$40 for folks under 40 years old, \$75 for WLT members, \$85 for the general public) includes snacks, desserts, beer, wine, hard cider, and non-alcoholic beverages, plus access to our silent auction. Get details and buy tickets at our website now.

### **Wagon Wheel Fundraiser**

*Saturday, May 24, 8:30 a.m. - 7:00 p.m.*

*Wagon Wheel Farm Stand, 927 Waltham Street, Lexington*

Pick up seedlings for your garden, groceries for the house, deli sandwiches, etc. at this family-owned farm stand just over the line in Lexington. Tell the cashier you love the Waltham Land Trust, and we get 20% of your purchase. No certificate needed, but we'll provide something at our website if you need a reminder! Not valid on mulch orders, landscaping services, or deliveries.

### **National Trails Day MCRT Cleanup**

*Saturday, June 7, 10:00 a.m. - 12:00 p.m.*

*Park/meet in AutoZone lot, 140 Lexington Street*

Help pick up litter and remove invasive plants from along the newly opened Mass Central Rail Trail on this day where people all over the country are celebrating trails. Supplies will be provided, but bring work gloves if you have them.

### **Wellington Fields Lemonade Social**

*Saturday, July 12, time tbd*

*Park across Trapelo Road on neighborhood streets*

Enjoy a cool lemonade and snacks, and meet the WLT stewards working to restore this historic site. Walk the paths through the Wellington Fields or explore the yard around the Wellington House. Parking is across Trapelo Road on neighborhood streets such as Sherwood Lane, Abbot Rd. If you have mobility issues, you can park at Wellington House.

**WALTHAM**



**Waltham Land Trust**  
**PO Box 541120**  
**Waltham MA 02454-1120**  
**[www.walthamlandtrust.org](http://www.walthamlandtrust.org)**  
***Protecting Waltham's land...  
forever.***

ADDRESS SERVICE REQUESTED

**Waltham Land Trust Journal** © 2025 Waltham Land Trust is published in Spring and Fall by Waltham Land Trust, Inc. PO Box 541120, Waltham MA 02454-1120. Waltham Land Trust, Inc. is a 501(c)(3) charitable corporation, and is a member of the Massachusetts Land Trust Coalition.

An electronic file (pdf) of this newsletter is available on our web site, <[www.walthamlandtrust.org](http://www.walthamlandtrust.org)>.

*Officers:* Nadene Stein (President), Barbara Jacobs (Vice Pres.), Anna Richardson (Clerk), Marc Rudnick (Treasurer)

*Directors:* Rita Cramer, Marie Daly, John Dieckmann, Deb Herman, Nat May, Daniel Melnechuk, Debbie von Rechenberg, Mark Sivers, Emily Szczypek, Diana Young

*Executive Director:* Sonja Wadman

*Published material represents the views of the authors and not necessarily those of the Waltham Land Trust.*

### **Waltham Land Trust's Mission**

To create a legacy of land conservation in Waltham by promoting, protecting, restoring, and acquiring open space.

We envision growth in public appreciation of natural resources, preservation and restoration of native habitat, and increased biodiversity to foster a healthier environment.

### **• SPECIAL GIFT MEMBERSHIP •**


Have a friend, neighbor, or relative you think would enjoy being part of the Waltham Land Trust? Why not give them a gift membership? **We are offering a special promotion for a limited time: 6 months for only \$10!** (The normal price of an individual membership is 12 months for \$25). **Support open space for a birthday or special occasion!**

To renew or join, visit our web site:  
[walthamlandtrust.org](http://walthamlandtrust.org)  
or call 781-893-3355

*Like Waltham Land Trust on Facebook.*  
*Like [walthamlandtrust](https://www.instagram.com/walthamlandtrust) on Instagram*  
*See videos at [youtube.walthamlandtrust.org](https://www.youtube.com/walthamlandtrust.org)*  
*See photos at [flickr.walthamlandtrust.org](https://www.flickr.com/photos/walthamlandtrust.org)*

Please send any comments to the return address, or email to  
<[info@walthamlandtrust.org](mailto:info@walthamlandtrust.org)>.

*If you're not already a WLT member and have received this complimentary copy, please consider joining today!*

 *Printed on recycled paper.*



## Wagon Wheel Nursery & Farmstand

### WLT FUNDRAISER

Saturday, May 24, 8:30 a.m. – 7 p.m.

927 Waltham Street, Lexington

It's time to start the garden and yard projects. Buy seeds, plants, garden supplies, groceries, deli sandwiches, flowers, fruit baskets, fish, etc., and the Waltham Land Trust gets 20% of your purchase with this coupon. Not valid on mulch orders, landscaping services, or deliveries.

**I am a Waltham Land Trust supporter!**  
Visit [walthamlandtrust.org](http://walthamlandtrust.org) or call  
781-893-3355 for information.



## Wagon Wheel Nursery & Farmstand

### WLT FUNDRAISER

Saturday, May 24, 8:30 a.m. – 7 p.m.

927 Waltham Street, Lexington

It's time to start the garden and yard projects. Buy seeds, plants, garden supplies, groceries, deli sandwiches, flowers, fruit baskets, fish, etc., and the Waltham Land Trust gets 20% of your purchase with this coupon. Not valid on mulch orders, landscaping services, or deliveries.

**I am a Waltham Land Trust supporter! Visit**  
[walthamlandtrust.org](http://walthamlandtrust.org) or call  
781-893-3355 for information.



## Wagon Wheel Nursery & Farmstand

### WLT FUNDRAISER

Saturday, May 24, 8:30 a.m. – 7 p.m.

927 Waltham Street, Lexington

It's time to start the garden and yard projects. Buy seeds, plants, garden supplies, groceries, deli sandwiches, flowers, fruit baskets, fish, etc., and the Waltham Land Trust gets 20% of your purchase with this coupon. Not valid on mulch orders, landscaping services, or deliveries.

**I am a Waltham Land Trust supporter! Visit**  
[walthamlandtrust.org](http://walthamlandtrust.org) or call  
781-893-3355 for information.



## Wagon Wheel Nursery & Farmstand

### WLT FUNDRAISER

Saturday, May 24, 8:30 a.m. – 7 p.m.

927 Waltham Street, Lexington

It's time to start the garden and yard projects. Buy seeds, plants, garden supplies, groceries, deli sandwiches, flowers, fruit baskets, fish, etc., and the Waltham Land Trust gets 20% of your purchase with this coupon. Not valid on mulch orders, landscaping services, or deliveries.

**I am a Waltham Land Trust supporter! Visit**  
[walthamlandtrust.org](http://walthamlandtrust.org) or call  
781-893-3355 for information.

