



# Waltham Land Trust's Stewardship Training

April 16, 2022

# Waltham Land Trust's People

- Founded in 1999 by neighborhood associations (HPA, PHAG, Beaver Brook, Island), community activists, environmentalists, and “just plain folks”
- Currently 16 Board Directors, 9 Advisors
- 1 Executive Director, 30 hours/week
- 6 committees of board members, ED, others, assist ED
- 415 paying memberships receive *The Journal*
- 2500+ supporters receive upcoming event e-blasts
- 300 trained volunteer stewards--including you!

# WLT's Mission

The Waltham Land Trust's mission is to create a legacy of land conservation in Waltham by promoting, protecting, restoring, and acquiring open space.

We envision growth in public appreciation of natural resources, preservation and restoration of native habitat, and increased biodiversity to foster a healthier environment.



# WLT's Funding

- Membership dues (individuals and businesses) and individual contributions
- Major special events -- *Green Space Blues Jam* in person! July date tbd: band, food, drinks, auction
- Grants from local foundations, family foundations, the Commonwealth
- Fundraisers: Thu. 4/21 Jake n JOES, 1265 Main St. WLT gets 20% w/sales following instructions

# WLT's Volunteer Stewards

- Regularly monitor section of trail
- On your own or with others
- Complete Reporting Form online every time
  - Prospect Hill Park separate form
- Remove trash (we provide bags & gloves)
- Can remove invasive plants once trained

# Becoming an Official WLT Steward

All must complete WLT form & waiver

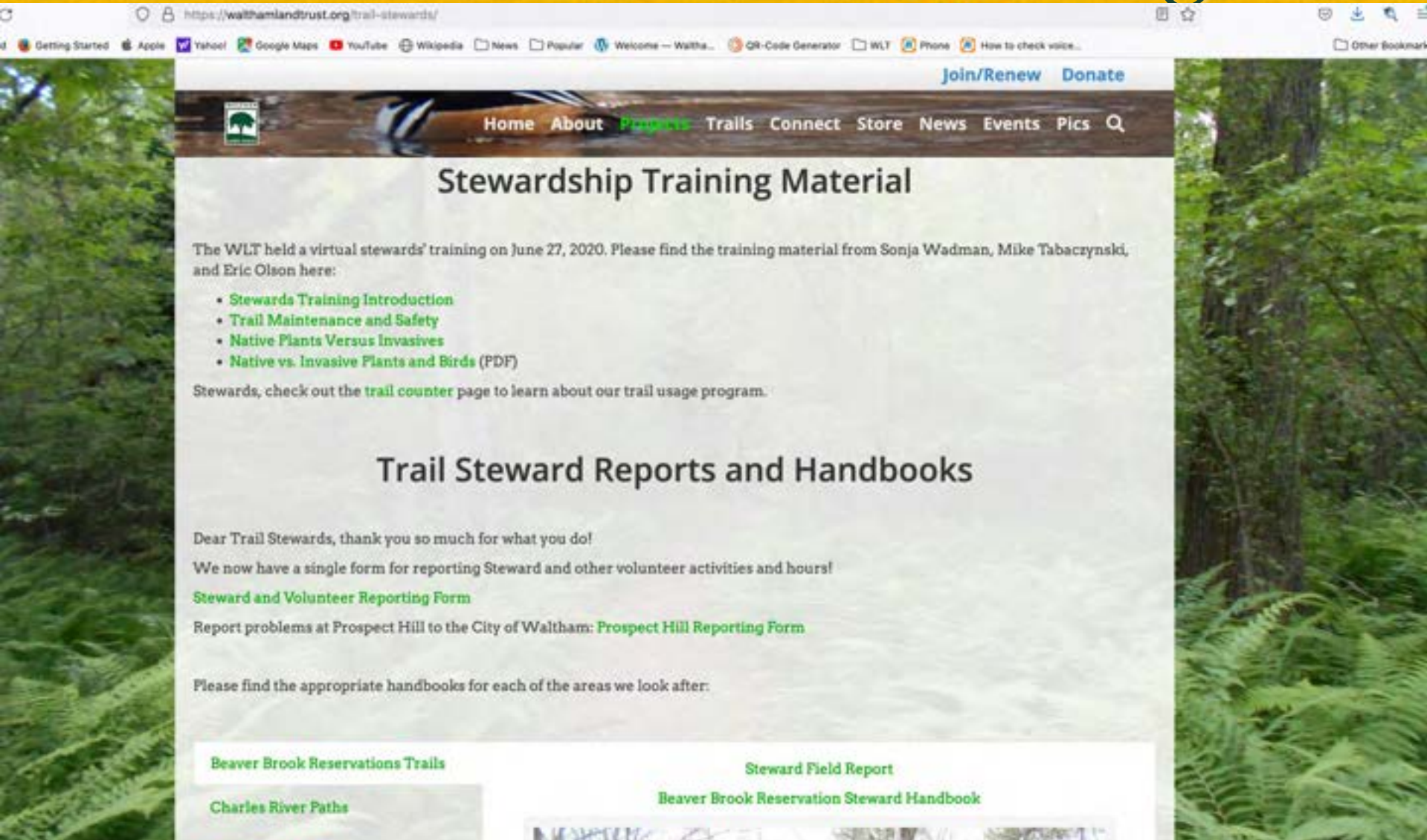
Once WLT gets form, added to the stewards e-list:

- mainly used by me to remind folks of activities
- stewards use it to organize small cleanups, ask ?s
- sometimes can be lots of emails
- can always unsubscribe

Meet at office/tool shed for supplies and orientation



# Trail Steward Resources @walthamlandtrust.org



The screenshot shows the Waltham Land Trust website with a focus on trail stewardship resources. The browser address bar shows the URL <https://walthamlandtrust.org/trail-stewards/>. The website header includes navigation links: Home, About, Projects, Trails, Connect, Store, News, Events, and Pics. A search icon is also present. The main content area is titled "Stewardship Training Material" and provides information about a virtual training session held on June 27, 2020. It lists four training materials: Stewards Training Introduction, Trail Maintenance and Safety, Native Plants Versus Invasives, and Native vs. Invasive Plants and Birds (PDF). Below this, it mentions a trail counter page. The second section is titled "Trail Steward Reports and Handbooks" and includes a thank you message to trail stewards. It provides links for reporting activities and hours, reporting problems at Prospect Hill, and finding handbooks for specific areas like Beaver Brook Reservations Trails, Charles River Paths, and Steward Field Report. The background of the website features a lush green forest scene.

[Join/Renew](#) [Donate](#)

[Home](#) [About](#) [Projects](#) [Trails](#) [Connect](#) [Store](#) [News](#) [Events](#) [Pics](#) [Q](#)

## Stewardship Training Material

The WLT held a virtual stewards' training on June 27, 2020. Please find the training material from Sonja Wadman, Mike Tabaczynski, and Eric Olson here:

- [Stewards Training Introduction](#)
- [Trail Maintenance and Safety](#)
- [Native Plants Versus Invasives](#)
- [Native vs. Invasive Plants and Birds \(PDF\)](#)

Stewards, check out the [trail counter](#) page to learn about our trail usage program.

## Trail Steward Reports and Handbooks

Dear Trail Stewards, thank you so much for what you do!

We now have a single form for reporting Steward and other volunteer activities and hours!

[Steward and Volunteer Reporting Form](#)

Report problems at Prospect Hill to the City of Waltham: [Prospect Hill Reporting Form](#)

Please find the appropriate handbooks for each of the areas we look after:

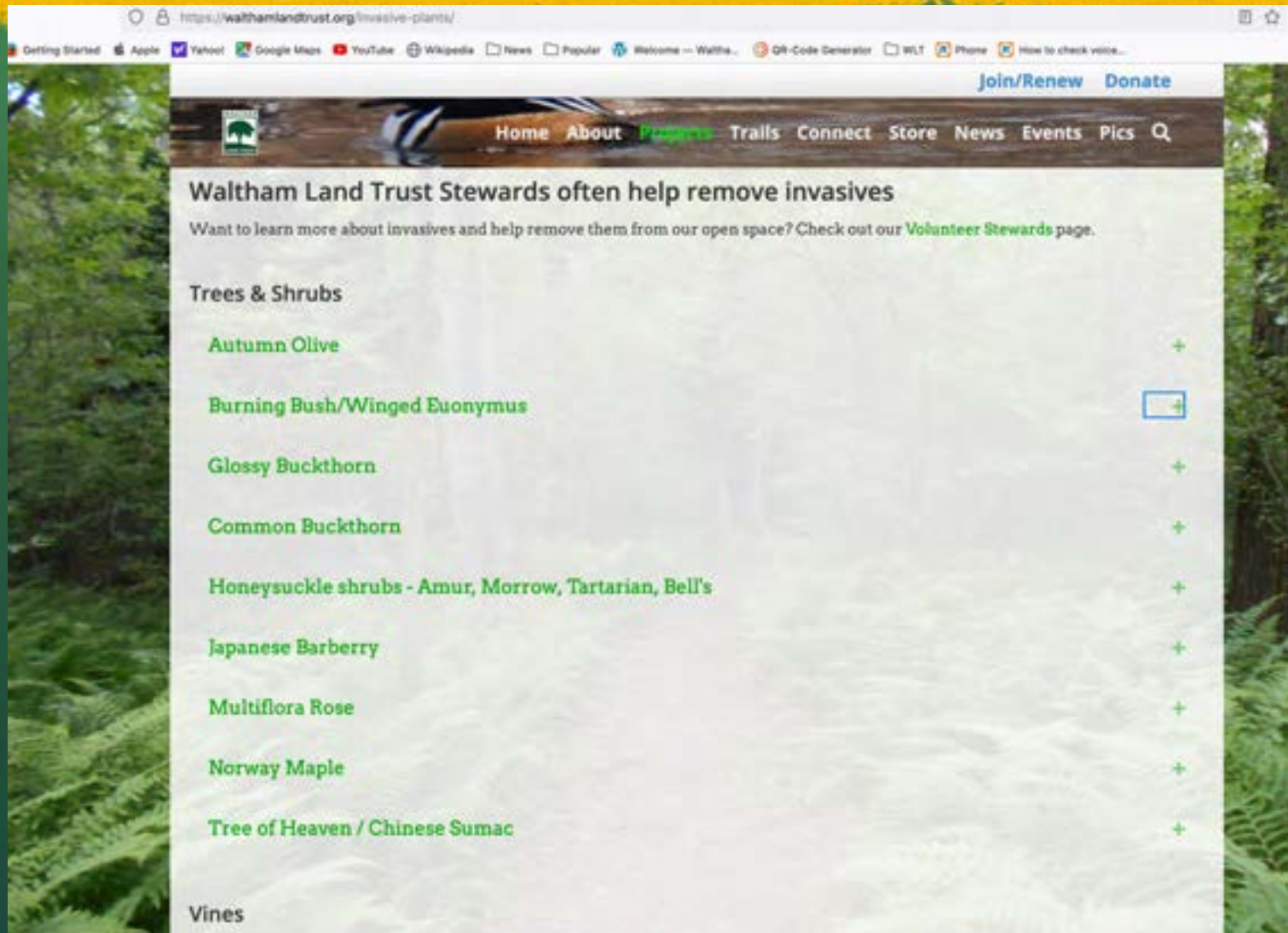
[Beaver Brook Reservations Trails](#)

[Charles River Paths](#)

[Steward Field Report](#)

[Beaver Brook Reservation Steward Handbook](#)

# <https://walthamlandtrust.org/invasive-plants/>






# Online Reporting Form

Your Information

Name \*    
First Last

Email \*

Date \*  /  /    
MM DD YYYY

What and where?

Primary Activity \* ☐ Trail Stewarding  
☐ Trash Pickup  
☐ Invasive Plant Removal  
☐ Chainsaw Crew  
☐ Other

Number of hours \*

Area \* ☐ Mass Central Rail Trail  
☐ Beaver Brook Reservations  
☐ Western Greenway  
☐ Prospect Hill Park  
☐ Charles River Paths  
☐ Hardy Pond  
☐ Other

Specific Location \*

Weather \*

Condition of location \*

# Online Reporting Form

## Follow Up Actions Performed/Recommended

- Actions performed/recommended ☐ No maintenance needed
- ☐ I performed required maintenance
- ☐ I'll contact WLT Stewards to assist
- ☐ There's a serious issue and an official should receive this report

## Pictures

- Pictures accompanying field report? ☐ Yes
- ☐ No

## Questions

Please contact Sonja at [swadman@walthamlandtrust.org](mailto:swadman@walthamlandtrust.org) or 781-893-3355 regarding the Waltham Land Trust Stewardship Project.



I'm not a robot



reCAPTCHA  
Privacy - Terms

SUBMIT

# Stewardship Handbooks

## I. About This Document

The purpose of this Handbook is to:

1. Define the Beaver Brook Reservations (North and Historic) Stewardship Program.
2. Outline the responsibilities of the Stewards.

We wish to acknowledge that most of this instruction has been adapted from the *Lexington Conservation Stewards Handbook*, 2005, written by Ery Largay, Lexington Conservation Assistant, Keith Ohmart, Lexington Stewards, Mike Tabaczynski, Lexington Stewards, and Tom Whelan, Lexington Stewards.

Adaptations were made by Sonja Wadman, Waltham Land Trust Executive Director, for the first training of volunteer stewards in Spring 2012. Adaptions were revised for subsequent trainings. Background has been provided by the Massachusetts Department of Conservation and Recreation (DCR) website <http://www.mass.gov/eea/agencies/dcr/massparks/region-boston/beaver-brook-reservation.html>. Comments and suggestions for improving this Handbook can emailed to Ms. Wadman at [swadman@walthamlandtrust.org](mailto:swadman@walthamlandtrust.org).

## II. Introduction

Beaver Brook Historic (BBH) Reservation is the first reservation established by the Metropolitan Parks Commission, later the MDC, which is now the Department of Conservation and Recreation (DCR) in 1893. It is still managed by the DCR and is 59 acres of open fields, wetlands and woodlands. Ponds, fields, marsh, and a cascading waterfall make the park's north section along Mill Street in Belmont a delightful place to walk or picnic. The more developed south section along Trapelo Road features ballfields, a wading pool, and a tot lot. Beaver Brook's historic significance includes reminders of its past; the remains of a 19th century fulling mill, the historic Robert Morris Copeland House (c.1835) and a monument to the Waverly Oaks, perhaps the most famous trees of the 1890's.

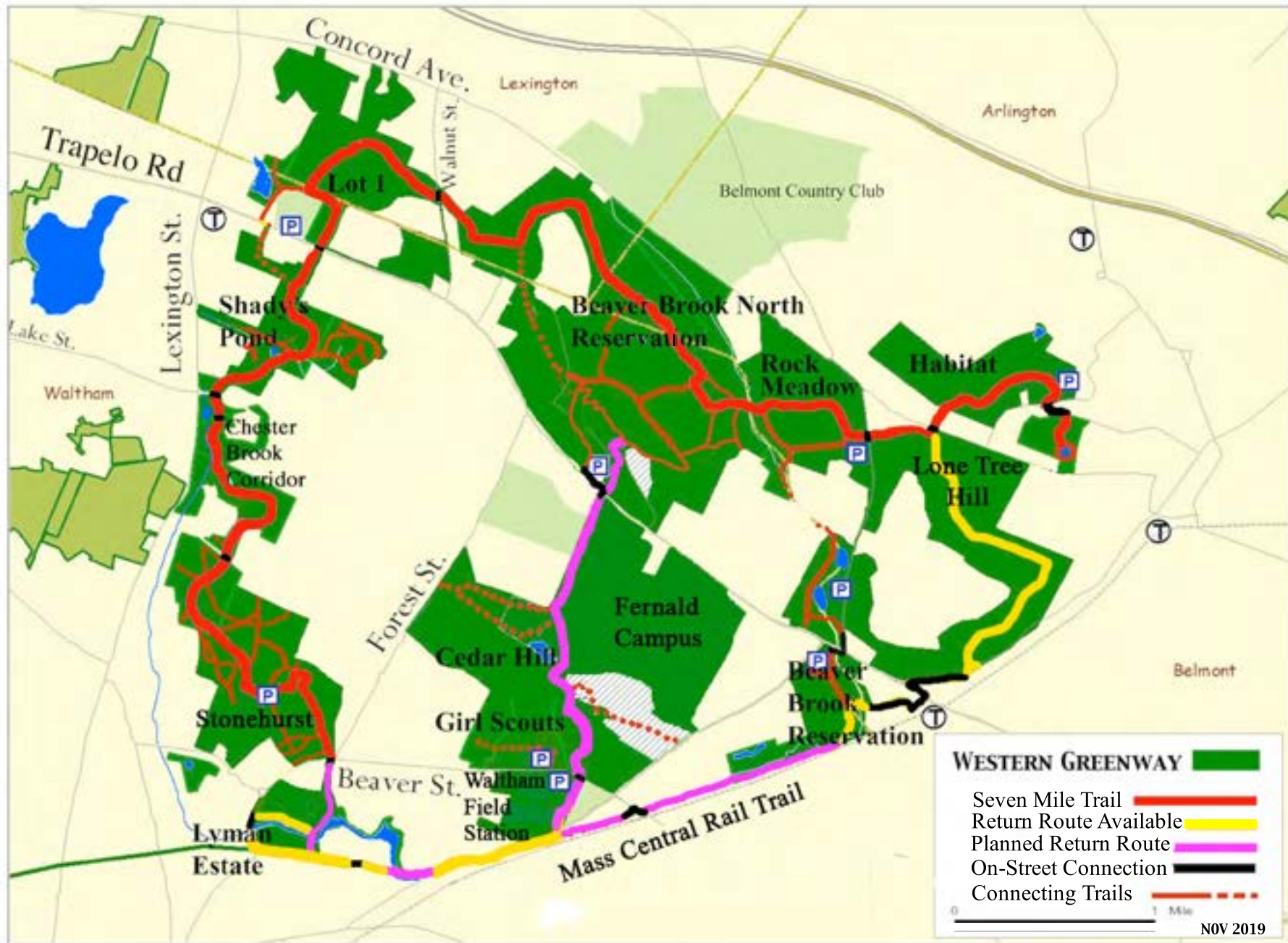
Beaver Brook North (BBN) Reservation represents a 254-acre transfer of a portion of the former Metropolitan State Hospital (MSH) property and former Middlesex County Hospital to the DCR. The MSH property acquisition also includes a 54-acre parcel under a conservation easement. The expanded reservation is strategically located amidst a series of open space parcels including Belmont's Rock Meadow Conservation Land, Massachusetts Audubon Society's Highland Farm, Waltham's Waltham Woods, Middlesex County Hospital open space, and Lexington's Concord



# WLT's Stewardship Projects

## Western Greenway Trail

- Stewards established 2012
- In Waltham, from Metropolitan Parkway west to Lot 1, south to Beaver Street (map on next slide)
- Easements “owned” by WLT
- Online Reporting Form goes to Sonja
  - No “official” receives report if problem
- Waltham Police, Fire, and Public Works help out



# WLT's Stewardship Projects

## Prospect Hill Park

- Stewards est. 2014
- Owned by City of Waltham
- Work closely with Ranger, Recreation Dept., Rec. Board
- Online Reporting form goes to Ranger Adam Green

## Charles River paths

- Stewards est. 2014
- Owned by MA Dept. Conservation & Recreation (DCR)
- Online Reporting Form goes to Sonja
  - DCR (Erica) receives if problem needs addressing



# WLT's Stewardship Projects

## Mass Central Rail Trail (MCRT)

- Stewards est. 2015
- Owned by MBTA, leased by DCR
- Abandoned railway ~parallel Rt. 20/Main Street (1-2 blocks north) from 1265 Main Street to Beaver Street
- Online Reporting Form goes to Sonja
  - DCR (Rene) receives if problem

## Beaver Brook North and Historic reservations

- Stewards est. 2015
- Owned by DCR
- Online Reporting Form goes to Sonja
  - DCR (Rene) receives if problem

# WLT's Stewardship Projects

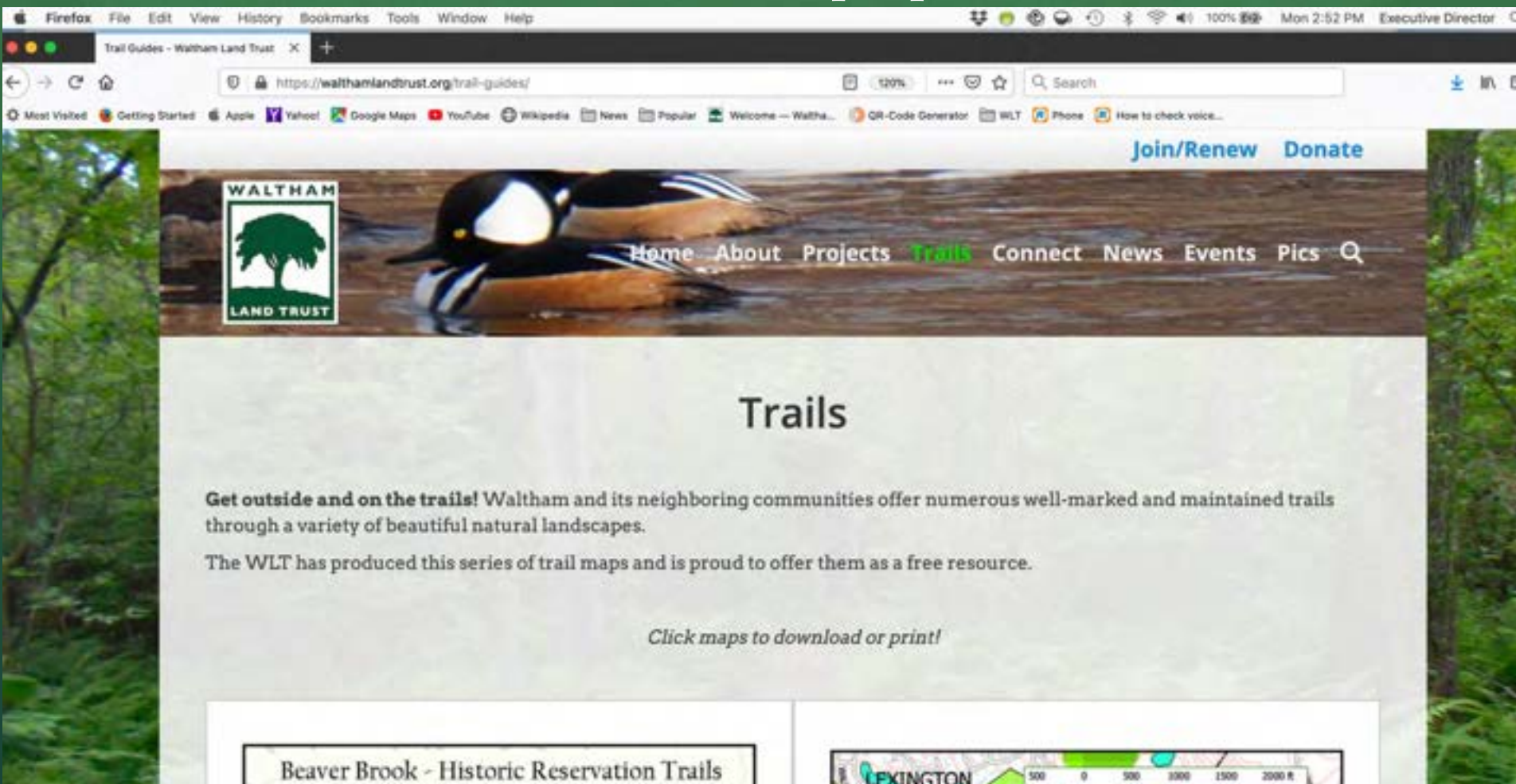
## Hardy Pond wetlands, shoreline and Smith Point

- Stewards est. 2017
- Hardy Pond itself, wetlands and shorelines owned by public
- Lazazzero Park owned by City of Waltham, Recreation Dept.
- Smith Point owned by WLT
- Online Reporting Form goes to Sonja
  - No “official” receives report if problem

Wellington Fields might be the next stewardship team...

# Trail Guides & Maps @walthamlandtrust.org

Trails→ Choose the proper locale





# More Trail Guides


Firefox File Edit View History Bookmarks Tools Window Help

Trail Guides - Waltham Land Trust

https://walthamlandtrust.org/trail-guides/

Join/Renew Donate

Home About Projects **Trails** Connect News Events Pics



The screenshot displays the Waltham Land Trust website's 'Trails' section. It features two map-based trail guides. The left map, titled 'Chester Brook Corridor', shows a trail route through Waltham, Massachusetts, with a legend indicating various trail types and landmarks. The right map, titled 'Middlesex County Hospital Lands', shows a trail route through Lexington and Waltham, Massachusetts, with a legend indicating various trail types and landmarks. Both maps include a scale bar and a north arrow.

**Chester Brook Corridor**

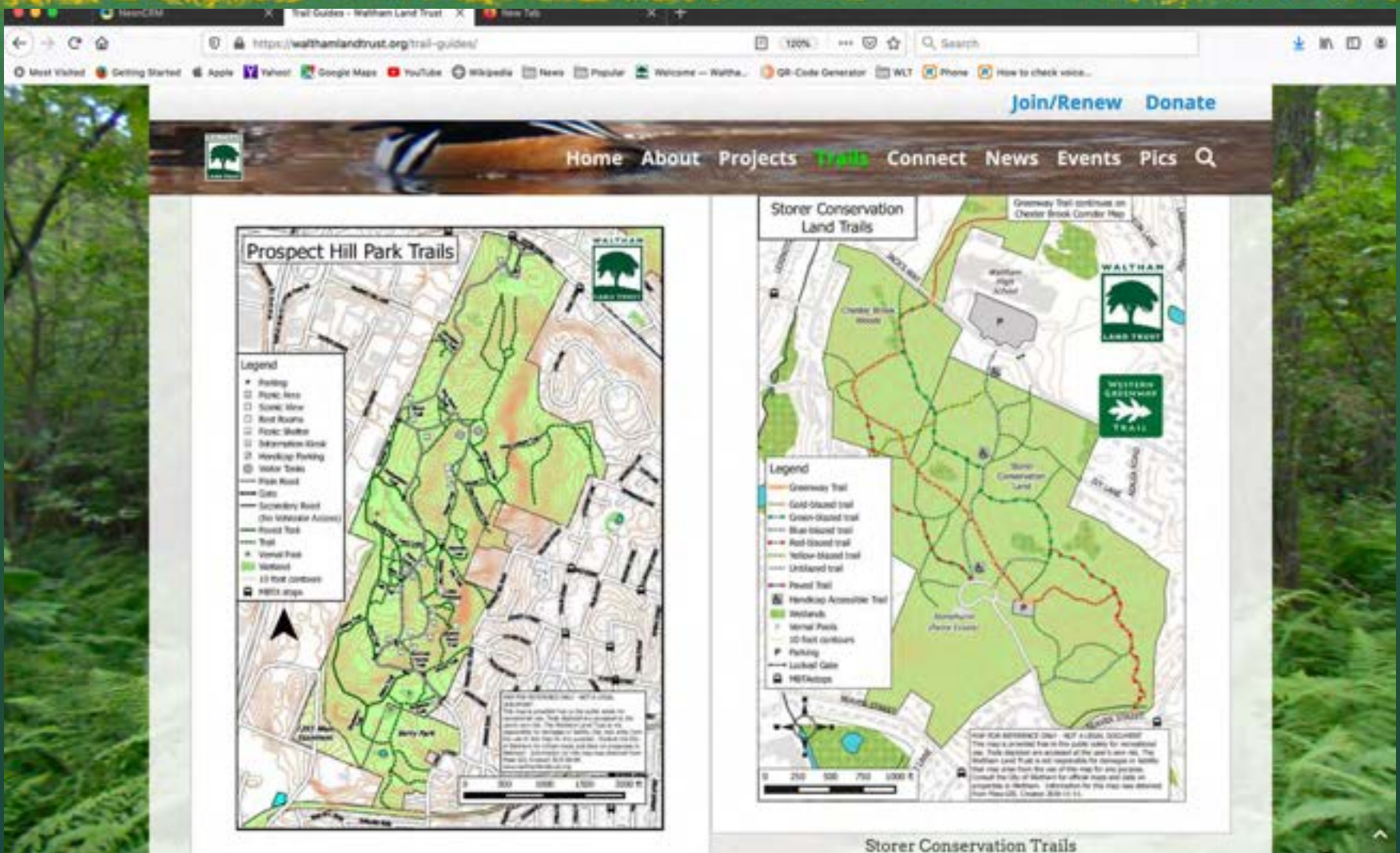
**Middlesex County Hospital Lands**

**Middlesex County Hospital**

**Chesterbrook Corridor**



# More Trail Guides



# Upcoming Group Events

- Charles River Earth Day Cleanup Sat. April 23, 10-noon, park/meet @ Shaw's, 130 River St.  
ATTENDANCE HIGHLY DESIRED
- We encourage stewards to self-organize small events on your own (with WLT support/supplies).
- Currently active stewards are organizing cleanups
  - Hardy Pond & Graverson Park (Betty MacKenzie)
  - Woerd Woods, Charles River (Jarek Reihner)
  - Others at PHP, along MCRT and WG as needed



# Stewardship Supplies



# Supplies & Meetings

Trash bags, gloves, WLT Steward business cards, Band-Aids, poison ivy & antibiotic wipes, WLT safety vest

Hand tools: small loppers, Nifty grabber, folding saw

Pick up at monthly (optional) Stewards meeting

- Second Wednesday, 6:30 - 7:30 pm
- Virtually via Zoom for now...
- Conference room by WLT office at 240 Beaver St., Waltham Field Station, MA 02452

Email Sonja ([swadman@walthamlandtrust.org](mailto:swadman@walthamlandtrust.org)) or call office (781-893-3355) to schedule appointment

THANK YOU FOR HELPING OUR TRAILS!