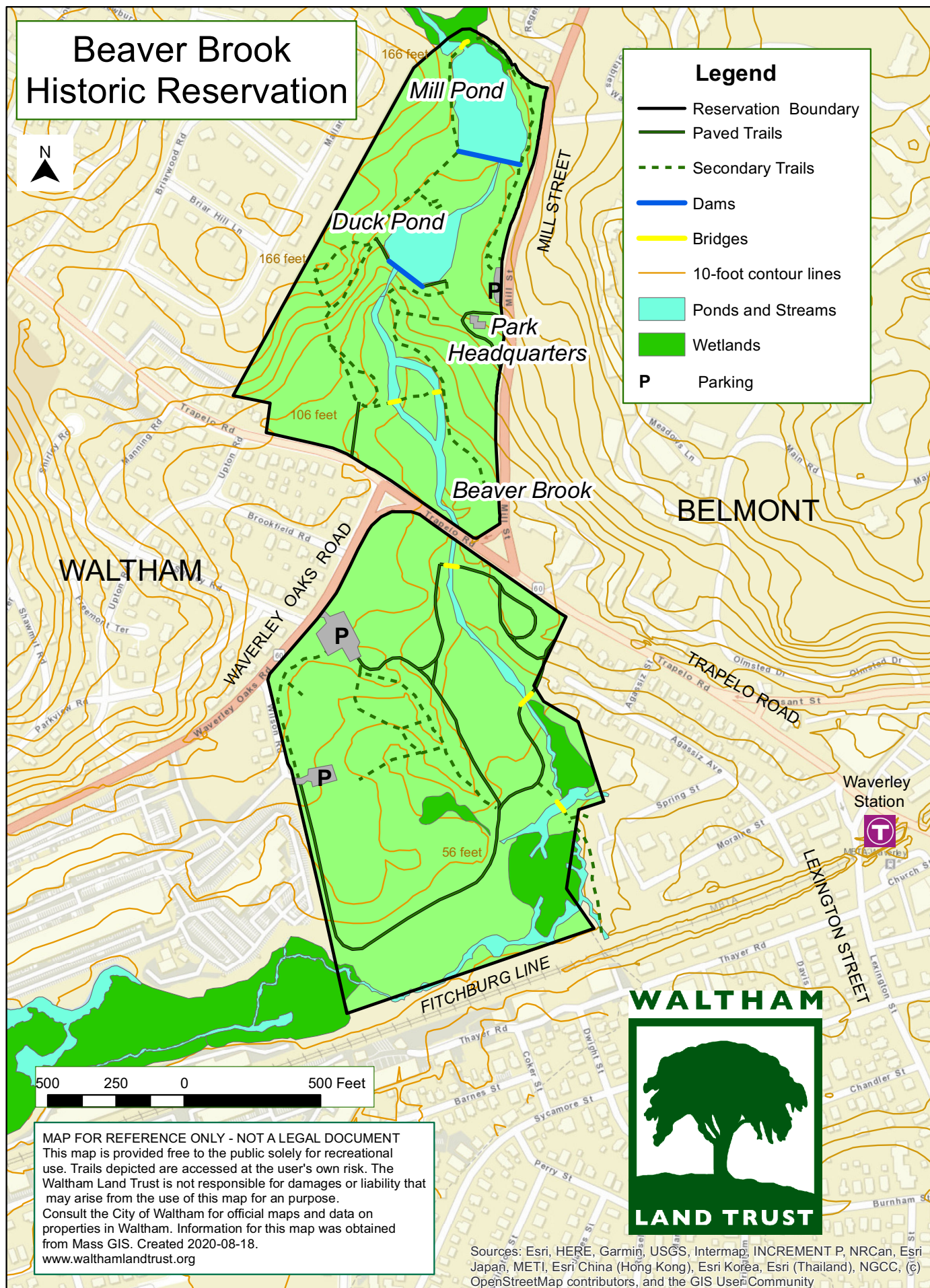


Beaver Brook Historic Reservation



Legend

- Reservation Boundary
- Paved Trails
- - - Secondary Trails
- Dams
- Bridges
- 10-foot contour lines
- Ponds and Streams
- Wetlands
- P** Parking



MAP FOR REFERENCE ONLY - NOT A LEGAL DOCUMENT
 This map is provided free to the public solely for recreational use. Trails depicted are accessed at the user's own risk. The Waltham Land Trust is not responsible for damages or liability that may arise from the use of this map for an purpose. Consult the City of Waltham for official maps and data on properties in Waltham. Information for this map was obtained from Mass GIS. Created 2020-08-18.
www.walthamlandtrust.org



Sources: Esri, HERE, Garmin, USGS, Intermap, INCREMENT P, NRCan, Esri Japan, METI, Esri China (Hong Kong), Esri Korea, Esri (Thailand), NGCC, (c) OpenStreetMap contributors, and the GIS User Community

Conservation and Recreation (DCR). Established in 1893, Beaver Brook Reservation's archaeological history includes two Native American sites, ruins of a mill that produced satin (finely woven fabric resembling satin), and a flour mill, as well as the historic Robert Morris Copeland house. Mills used in the preparation of woolen cloth had been located by the cascade below the dam from 1662 to 1849. For more than a century, the park's cascades and trees have inspired artists, writers, naturalists and landscape architects such as Winslow Homer, Christopher Pearse Cranch, James Russell Lowell, Frank Bolles, Louis Agassiz, Robert Morris Copeland and Charles Eliot.

A stand of 22 ancient white oaks known as the Waverley Oaks once grew on the south side of the reservation. Responding to a suggestion to establish a park to save the Waverley Oaks, Charles Eliot broadened the idea by proposing the organization that became the Trustees of Reservations in 1891, making it the nation's first preservation and conservation nonprofit organization.

The **Waltham Land Trust** invites you to join in helping preserve, protect and maintain Waltham's open spaces.

Waltham Land Trust, Inc.
PO Box 541120
Waltham MA 02454-1120
Phone: (781) 893-3355
www.walthamlandtrust.org
info@walthamlandtrust.org

V20200912

Site Facts

Owner: Massachusetts Department of Conservation and Recreation

Acreage: 59 acres

Terrain: Relatively flat with rocky areas and glacial moraines. Some wooded areas and some developed ones.

Trail rating and elevation gain: Easy — Developed walking areas including paved and groomed trails. Elevation gain is approximately 110 feet from the southern end to the northern end of the reservation.

Highlights: This is the first reservation in the Metropolitan Park System. Duck ponds, waterfalls, historic buildings.

Hazards: Unprotected access to waterways. Busy road divides the park.

Special rules: Dogs must be on leashes. Off limits to all motorized vehicles including ATVs.

Access and Parking: Contact DCR for up-to-date conditions and accessibility.

Public transportation:

- Bus #73 (Harvard Station – Waverley Square) — get off at last stop in Waverley Square.
- Bus #554 (Downtown Boston via Newton Corner and Waverley Square) — get off at Waverley Oaks Rd opposite Brookfield Rd.
- Commuter Rail — Fitchburg line (Waverley Station stop).

Contact: MA DCR, (617) 626-1250; mass.parks@state.ma.us

Websites: www.mass.gov/locations/beaver-brook-reservation

**Please help us
keep the park clean!**



Waltham Land Trust Guide to Open Spaces

Beaver Brook Historic Reservation

Park Overview

The **Beaver Brook Historic Reservation** is located near Waverley Square, at the intersection of Waverley Oaks Road, Mill Street and Trapelo Road, and is accessible by public transportation. The park is bisected by Trapelo Road.

Two ponds, fields, marshes and a cascading waterfall make the park's north section a delightful place to walk or picnic. Parking spaces are along Mill Street.

The more developed south section features paved trails, restrooms, picnic tables, ball fields, tennis courts, a spray park and a wheelchair-accessible playground. The parking lot entrance is on Waverley Oaks Road with limited on-street parking on Trapelo Road.

History

This is the first reservation created by the Metropolitan Parks Commission which is now the Department of