

# Waltham Land Trust's Stewardship Training

June 27, 2020

# Waltham Land Trust's People

- Founded in 1999 by neighborhood associations (HPA, PHAG, Beaver Brook, Island), community activists, environmentalists, and “just plain folks”
- Currently 13 Board Directors, 9 Advisors
- 1 Executive Director, 30 hours/week
- 6 committees of board members, ED, others, assist ED
- 350 paying memberships receive *The Journal*
- 2500+ supporters receive upcoming event e-blasts
- 240 trained volunteer stewards--including you!

# WLT's Mission

The Waltham Land Trust's mission is to create a legacy of land conservation in Waltham by promoting, protecting, restoring, and acquiring open space.

We envision growth in public appreciation of natural resources, preservation and restoration of native habitat, and increased biodiversity to foster a healthier environment.

# WLT's Funding

- Membership dues (individuals and businesses) and individual contributions
- Major special events -- *Green Space Blues Jam In Place*, July 15-19 online auction, July 18 virtual dance party with live stream blues duo
- Grants from local foundations, family foundations, the Commonwealth
- Fundraisers: Not Your Average Joe's, 1265 Main St. all summer, say you support WLT, we get 15%

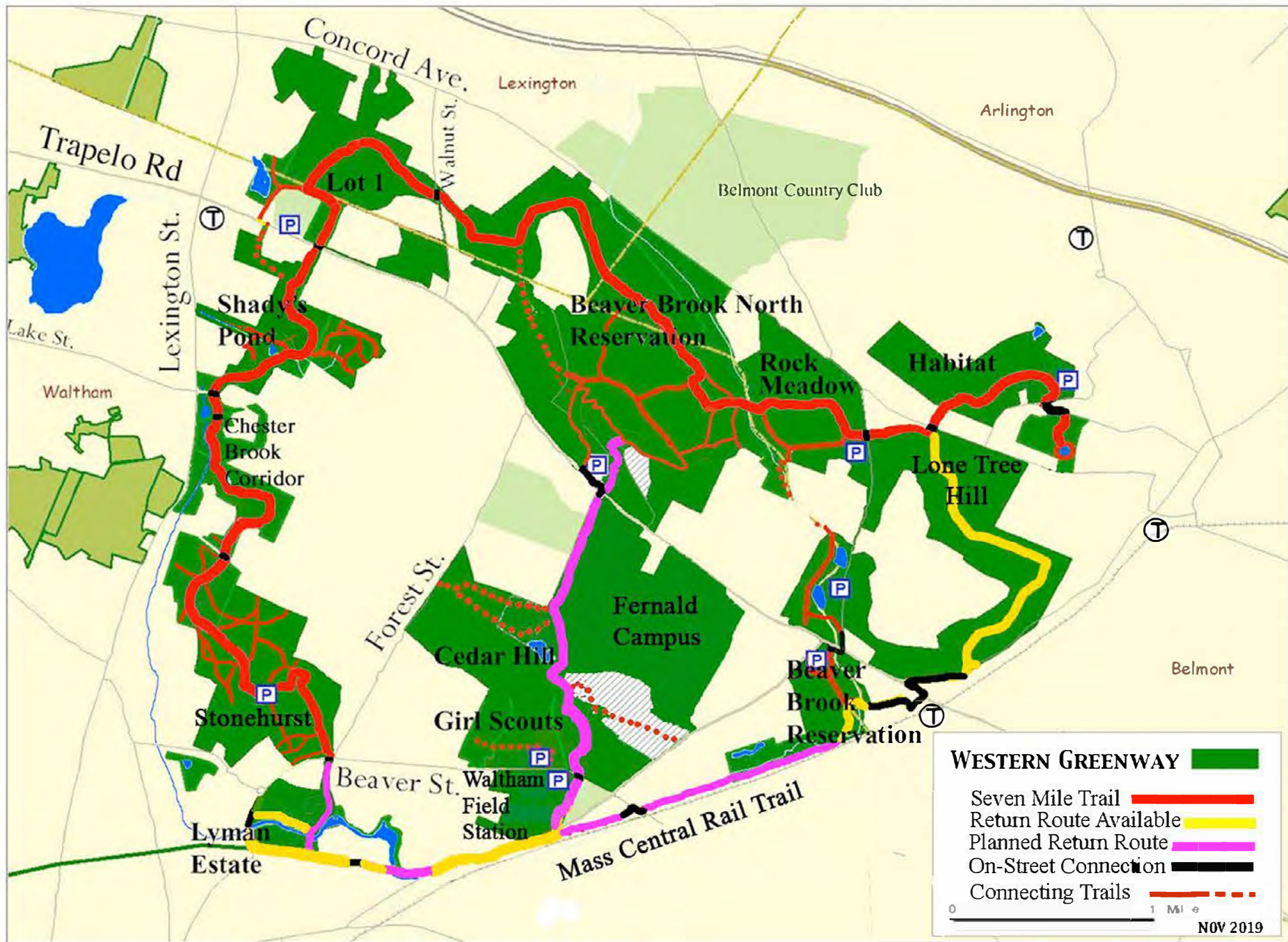
# WLT's Volunteer Stewards

- “Eyes and ears” of trails and open spaces
- Ideally regularly monitor section of trail, complete Field Report online
- Remove trash (we provide bags & gloves)
- Can remove invasive plants once trained
- All must complete WLT form & waiver

# WLT's Stewardship Projects

## Western Greenway Trail

- Stewards established 2012
- In Waltham, from Metropolitan Parkway west to Lot 1, south to Beaver Street (map on next slide)
- Easements “owned” by WLT
- Online Field Report goes to Sonja
  - WLT homepage>Projects>Trail Stewards>WG trail
- Waltham Police, Fire, and Public Works help out



# WLT's Stewardship Projects

## Prospect Hill Park

- Stewards est. 2014
- Owned by City of Waltham
- Work closely with Ranger, Recreation Dept., Rec. Board
- Must complete City's form & CORI, give to Ranger
- Online Field Report goes to Ranger Adam Green
  - WLT homepage>Projects>Trail Stewards>Prospect Hill

## Charles River paths

- Stewards est. 2014
- Owned by MA Dept. Conservation & Recreation (DCR)
- Online Field Report goes to Sonja and DCR (Erica)
  - WLT homepage>Projects>Trail Stewards>Charles River

# WLT's Stewardship Projects

## Mass Central Rail Trail (MCRT)

- Stewards est. 2015
- Owned by MBTA, leased by DCR
- Abandoned railway ~parallel Rt. 20/Main Street (1-2 blocks north) from 1265 Main Street to Beaver Street
- Online Field Report goes to Sonja and DCR (Erica)
  - WLT homepage>Projects>Trail Stewards>Mass Central

## Beaver Brook North and Historic reservations

- Stewards est. 2015
- Owned by DCR
- Online Field Report goes to Sonja and DCR (Rene)
  - WLT homepage>Projects>Trail Stewards>Beaver Brook

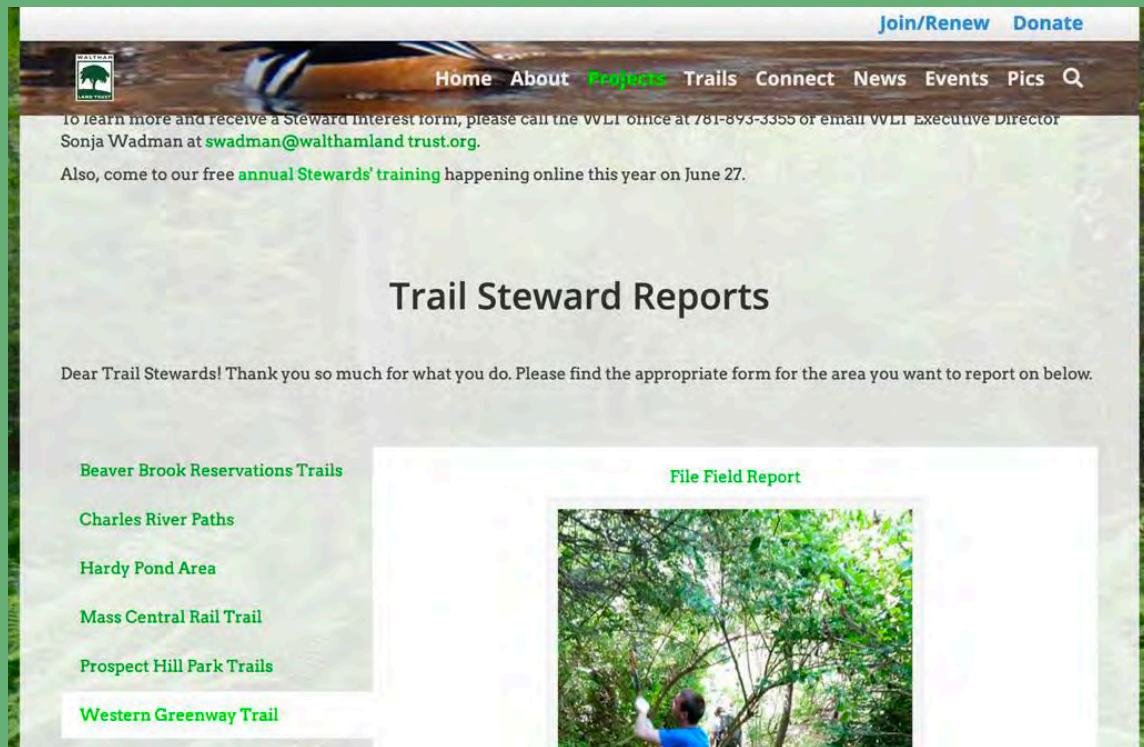
# WLT's Stewardship Projects

## Hardy Pond wetlands, shoreline and Smith Point

- Stewards est. 2017
- Hardy Pond itself, wetlands and shorelines owned by public
- Lazazzero Park owned by City of Waltham, Recreation Dept.
- Smith Point owned by WLT
- Online Field Report goes to Sonja
  - WLT homepage>Projects>Trail Stewards>Hardy Pond

# Trail Steward Reports @walthamlandtrust.org

Projects → Trail Stewards → Choose the proper locale



The screenshot shows the Waltham Land Trust website. The header includes a logo, navigation links (Home, About, **Projects**, Trails, Connect, News, Events, Pics), and links for Join/Renew and Donate. A banner at the top features a photo of a person on a kayak. Below the banner, text invites visitors to learn more and receive a Steward Interest form by calling 781-893-3355 or emailing Sonja Wadman at [swadman@walthamlandtrust.org](mailto:swadman@walthamlandtrust.org). It also mentions free annual Stewards' training on June 27.

## Trail Steward Reports

Dear Trail Stewards! Thank you so much for what you do. Please find the appropriate form for the area you want to report on below.

**Beaver Brook Reservations Trails**

**Charles River Paths**

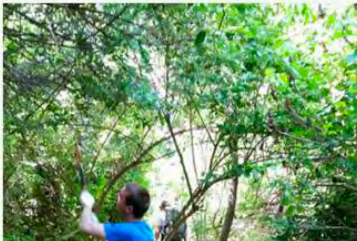
**Hardy Pond Area**

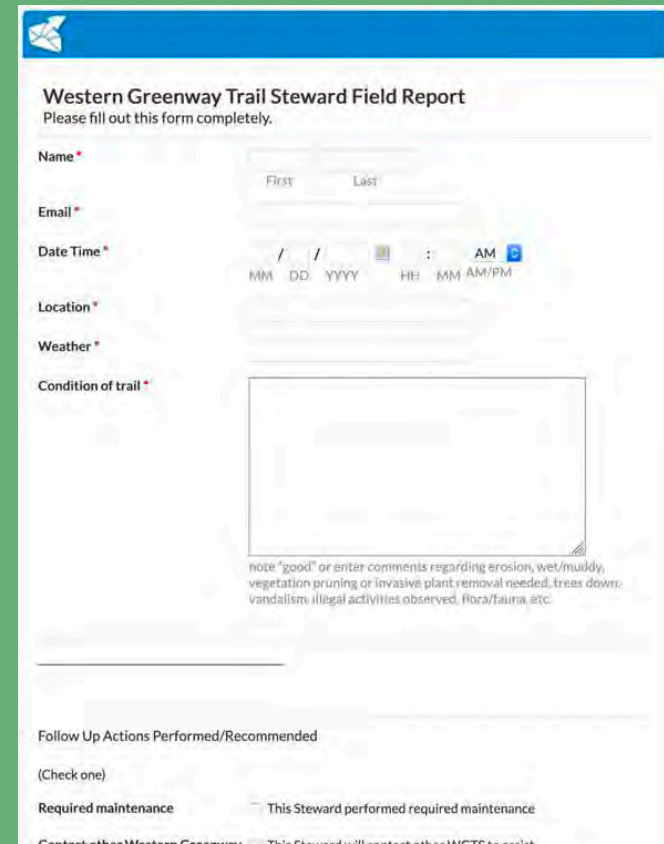
**Mass Central Rail Trail**

**Prospect Hill Park Trails**

**Western Greenway Trail**

**File Field Report**





**Western Greenway Trail Steward Field Report**  
Please fill out this form completely.


**Name \***  
First: \_\_\_\_\_ Last: \_\_\_\_\_

**Email \***  
\_\_\_\_\_

**Date Time \***  
MM / DD / YYYY HH : MM AM/PM

**Location \***  
\_\_\_\_\_

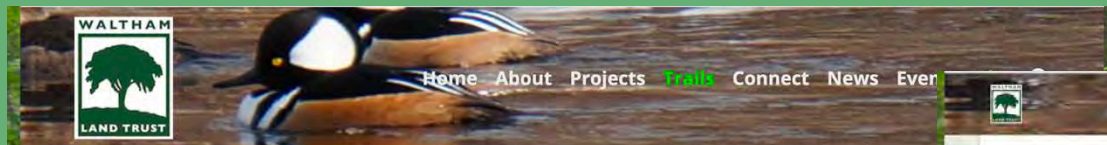
**Weather \***  
\_\_\_\_\_

**Condition of trail \***  
  
note "good" or enter comments regarding erosion, wet/muddy, vegetation pruning or invasive plant removal needed, trees down, vandalism, illegal activities observed, flora/fauna, etc.

**Follow Up Actions Performed/Recommended**  
(Check one)  
☐ Required maintenance ☐ This Steward performed required maintenance  
☐ Contact other Western Greenway ☐ This Steward will contact other WGTS to assist

# Trail Guides & Maps @walthamlandtrust.org

Trails→ Choose the proper locale

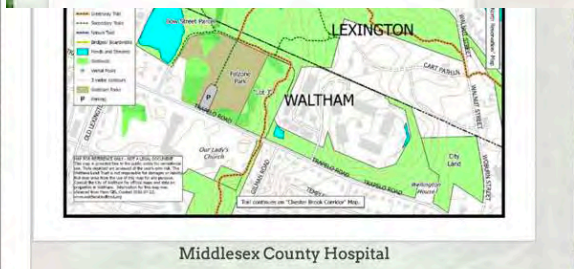
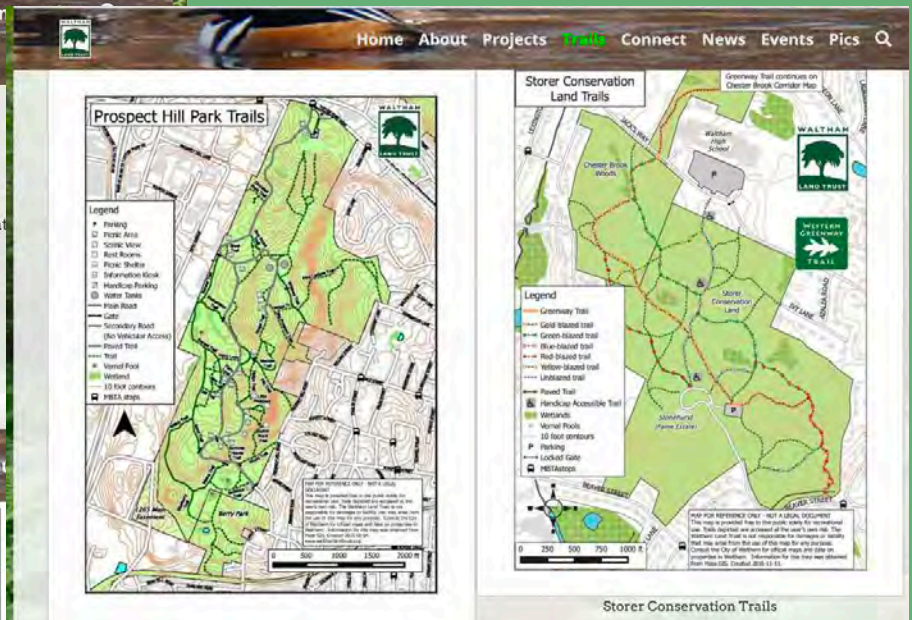
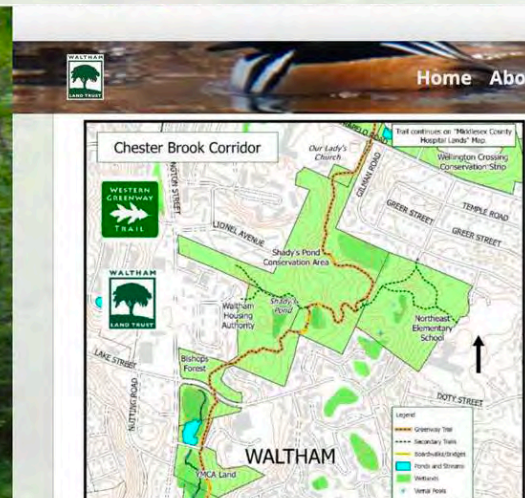
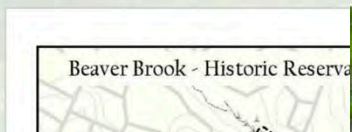


## Trails

**Get outside and on the trails!** Waltham and its neighboring communities offer numerous well-marked and maintained trails through a variety of beautiful natural landscapes.

The WLT has produced this series of trail maps and is proud to offer them as a free resource.

*Click maps to download or print!*



# Upcoming Group Events

- Sadly, because of COVID-19, the WLT has no official group work sessions planned.
- We encourage stewards to self-organize small events on your own (with WLT support/supplies).
- Currently active stewards are organizing cleanups
  - Hardy Pond/Graverson Park (Betty MacKenzie)
  - Mass Central Rail Trail (Laurel Carpenter)
  - Others at PHP, along WG as needed

# Becoming an Official WLT Steward

- All must complete WLT steward interest form and liability waiver and return to Sonja at [swadman@walthamlandtrust.org](mailto:swadman@walthamlandtrust.org)
- Those wanting to volunteer at Prospect Hill Park should also complete City's form with CORI
- Once I get your WLT form, you're added to the stewards e-list, which anyone on list can access via [Stewards\\_Com@walthamlandtrust.org](mailto:Stewards_Com@walthamlandtrust.org)
  - Mainly used by me to remind folks of activities
  - Stewards use it to organize small cleanups, ask ?s

# Supplies & Meetings

Trash bags, gloves, WLT Steward business cards, Band-Aids, poison ivy & anti-septic wipes, WLT safety vest

Hand tools: small loppers, folding saw

Pick up at monthly (optional) Stewards meeting

- Normally, second Wednesday, 6:30 - 7:30 pm
- Conference room by WLT office at 240 Beaver St., Waltham Field Station, MA 02452

Email Sonja ([swadman@walthamlandtrust.org](mailto:swadman@walthamlandtrust.org)) or call office (781-893-3355) to schedule appointment

THANK YOU FOR HELPING OUR TRAILS!

# Stewardship Supplies & Tools

